



396.9104+/- PRIME MIXED USE ACRES
OIL, GAS AND MINERAL RIGHTS INCLUDED
COLLIERS TOWNSHIP, ALLEGHENY COUNTY, PA



Market DISTRICT

STARBUCKS

Walmart Save money. Live better.

DICK'S SPORTING GOODS

PREPARED FOOD SHEETZ MADE TO ORDER

SETTLERS CABIN WATERFALL & PARK

PITTSBURGH BOTANICAL GARDEN

PANHANDLE TRAIL ENTRANCE

NEVILLEWOOD COUNTRY CLUB

RAY ZIOLKOWSKI 5H—RANGE RESOURCES
 API: 003-22553
 TARGET: MARCELLUS
 PRODUCING WELL
 AVERAGING 7.23 MMcf/d

ACAA 1C—CNX
 API: 003-22299
 TARGET: MARCELLUS
 PRODUCING WELL
 AVERAGING 5.71 MMcf/d

ALOE FAMILY 9H—RANGE RESOURCES
 API: 125-28622
 TARGET: MARCELLUS
 PRODUCING WELL
 AVERAGING 11.45 MMcf/d

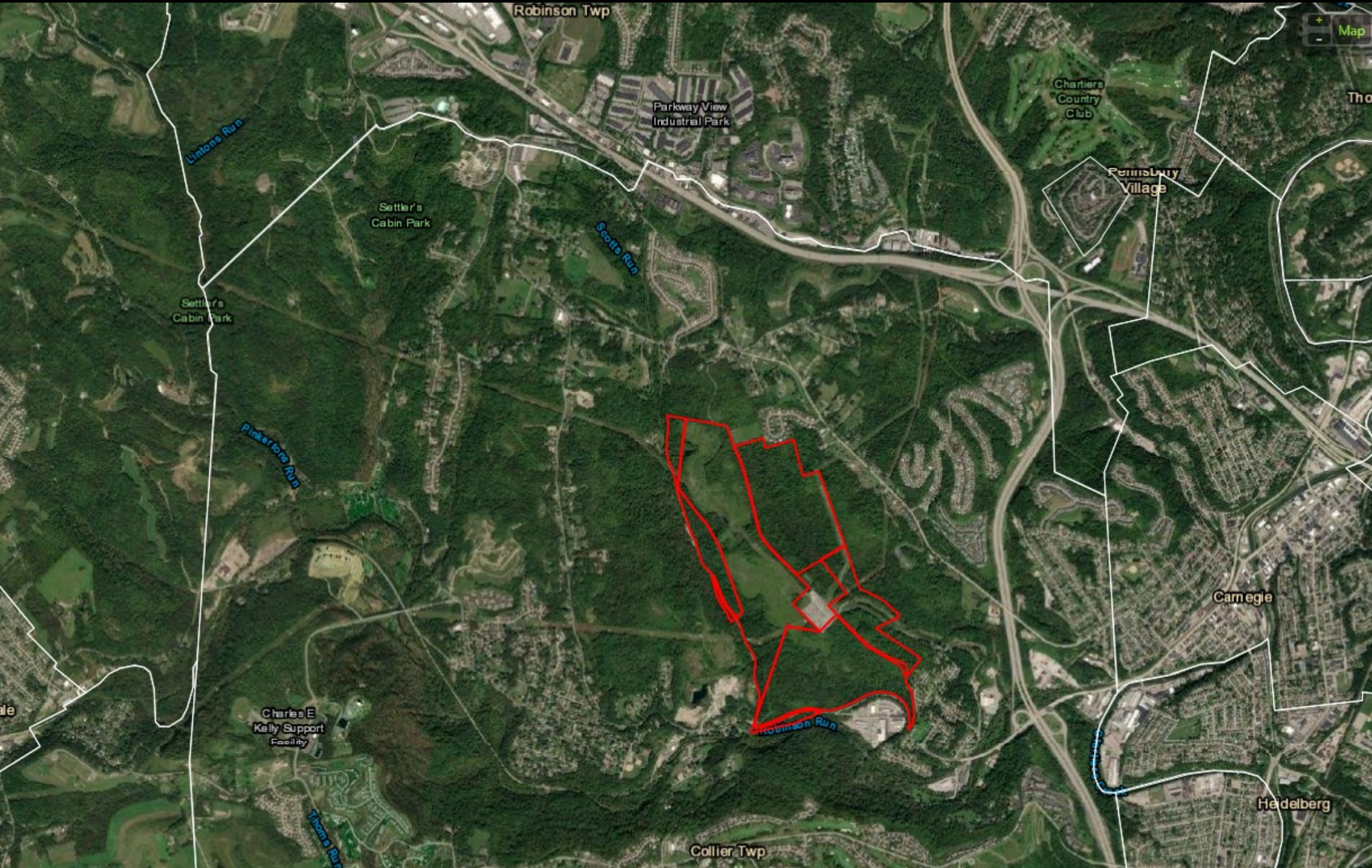
GEORGE AUGUSTINE 13H—RANGE RESOURCES
 API: 125-28818
 TARGET: MARCELLUS
 PRODUCING WELL
 AVERAGING 25.57 MMcf/d



- Unconventional Producing
- Unconventional Drilled
- Unconventional Permit
- Net Mineral Acres
- Lateral



396.9104+/- PRIME MIXED USE ACRES
OIL, GAS AND MINERAL RIGHTS INCLUDED
COLLIERS TOWNSHIP, ALLEGHENY COUNTY, PA





**396.9104+/- PRIME MIXED USE ACRES
OIL, GAS AND MINERAL RIGHTS INCLUDED
COLLIERS TOWNSHIP, ALLEGHENY COUNTY, PA**

396.9104+/- Prime Mixed Use (PEDD Zoning) acres with oil, gas and mineral rights included in Colliers Township, Allegheny County, Pennsylvania. Water, electric, sewer and gas are available. Powerline and gas line easements in place.

Conveniently located near the I-79 and I-376 interchange— a short drive to the Pittsburgh International Airport (13.5 miles) and downtown Pittsburgh (8.5 miles to Heinz Field).

Abundance of shopping, restaurants, and recreational opportunities in the immediate area. Road frontage on Fort Pitt, Scotts Run, and Noblestown Road.

Combination of open fields and wooded areas.

PEDD Zoning Allow for multiple uses—see zoning table

Gross Acres: 396.9104+/-

Net Mineral Acres Available: 396.9104+/-

Unitized: No

Well/Unit Name: No

Producing: No

Lessee: N/A

Royalty Rate: N/A

Royalty Type: N/A

Lease Date: N/A

Primary Term Length: N/A

Extension Term Length: N/A

Extension Payment Amount: N/A

Land & OGMs Offered At: \$5,977,000

Parcel #:

200-D-5

201-K-2

201-E-2

202-N-1

201-K-1

200-L-1

200-D-1

For Questions or To Make An Offer:

Will Smith—Landman
will@cx-energy.com
412-327-7466

CX-Energy
724-933-1311
www.cx-energy.com

All information furnished regarding this property for sale, or lease is from sources deemed reliable but no warranty or representation is made as to the accuracy thereof and same is submitted subject to error, omissions, change of price, rental or other conditions prior sale, lease, or financing or withdrawal without notice.

CX-Energy will make no representations and assume no obligation regarding the accuracy of this data and assumes no risk for hazardous waste or substances or other undesirable material on or about the property which will ultimately be leased or purchased.