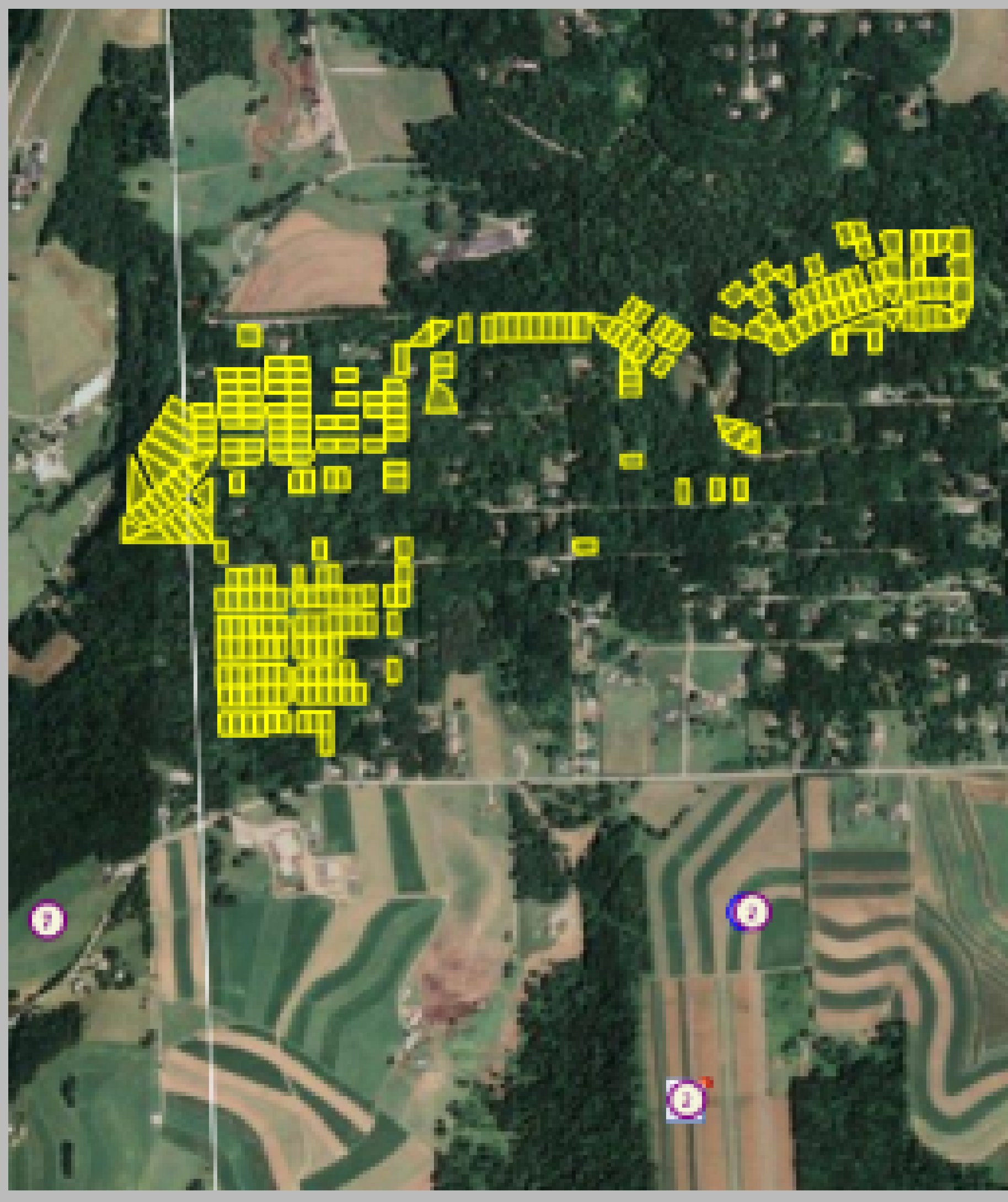


Listing Jem14-0019

62+/- Net Mineral Acres Butler County, PA Connequenessing Township



Scan the code above with your mobile device or click it to go directly to the CX Energy website for Listing Jem14-0019

Details

Address: Connoquenessing, Pennsylvania
Seller: Letterman Moore
State: Pennsylvania
County: Butler County

Real Estate Agent Information

Township: Connoquenessing
Net Mineral Acres: 62
Unitized: Yes
Primary Term: 5
Extension Term: 5

Description

This property is 62.13+/- net mineral acres located in Lancaster Township and Connoquenessing Township, Butler County, Pennsylvania, with 8.5+/- net mineral acres in the new...

Location

